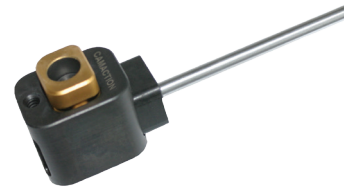
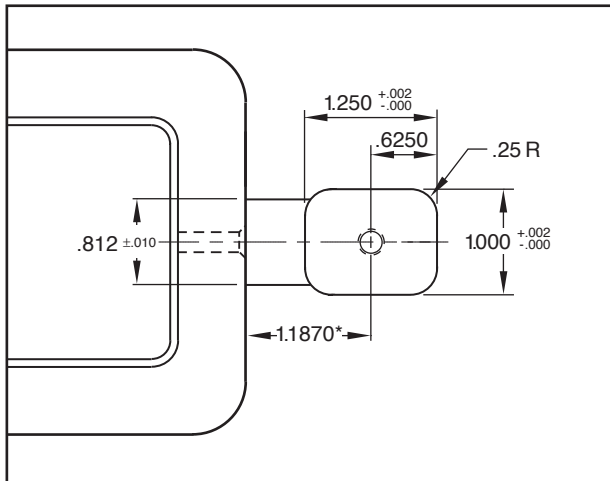




CAM ACTION® 100 SERIES

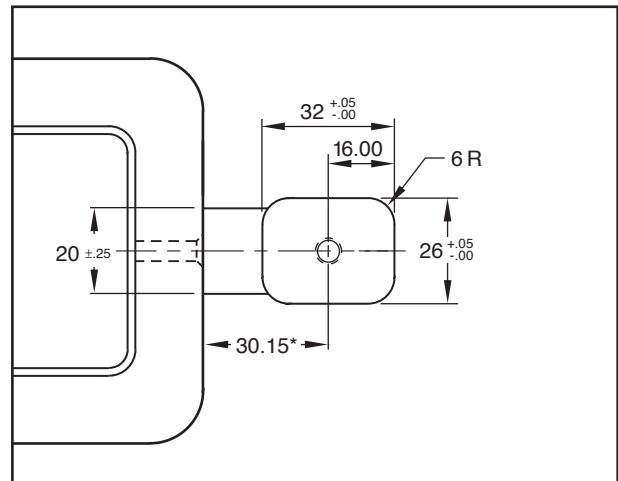


Inch Standard

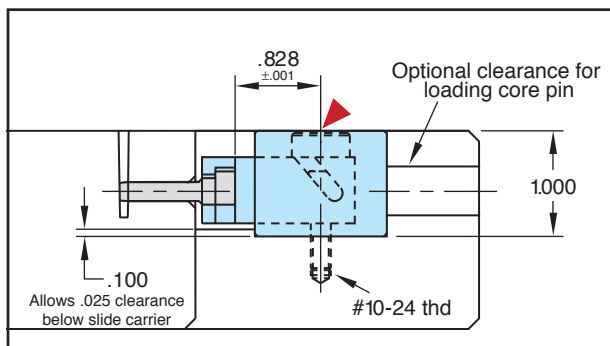


Note: When the core pin is not shutting off on the inner core wall, the distance from the edge of the insert should be 1.142 for the slide carrier to shut off against the core insert.

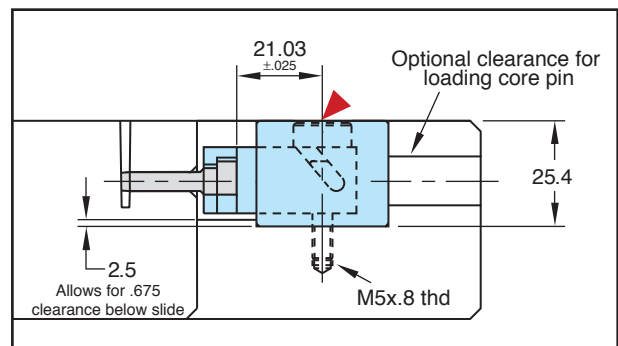
Metric Standard



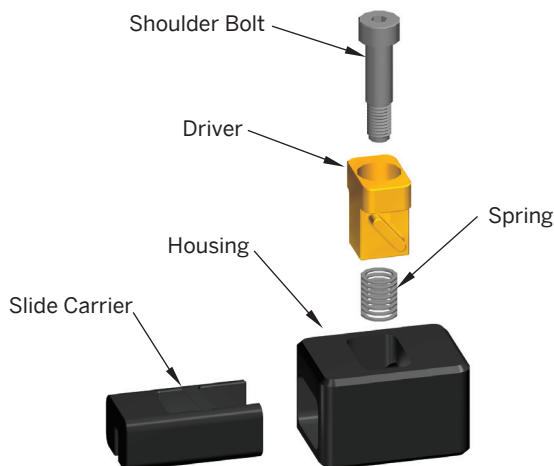
Note: When the core pin is not shutting off on the inner core wall, the distance from the edge of the insert should be 29.00 for the slide carrier to shut off against the core insert.



Note: .828 dimension must be maintained to avoid improper spring pre-load or damage to internal components.



Note: 21.03 dimension must be maintained to avoid improper spring pre-load or damage to internal components.



Travel = .160" (4mm)

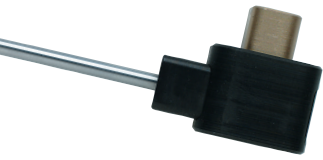
▶ CAD insertion point

CATALOG NUMBER	DESCRIPTION
CA-100	CamAction Unit
CAMM-100	Metric CamAction Unit

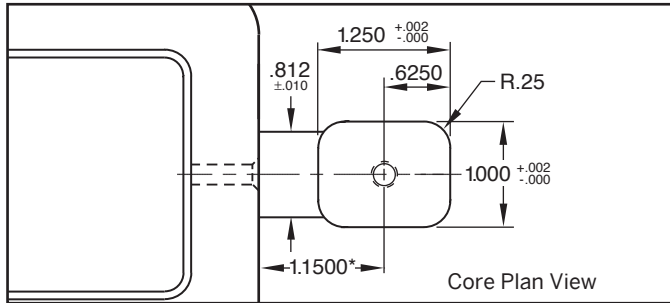
Note: Max operating temperature 300°F.

Replacement parts are available. Refer to the price list for catalog numbers and pricing, and contact Customer Service for availability.

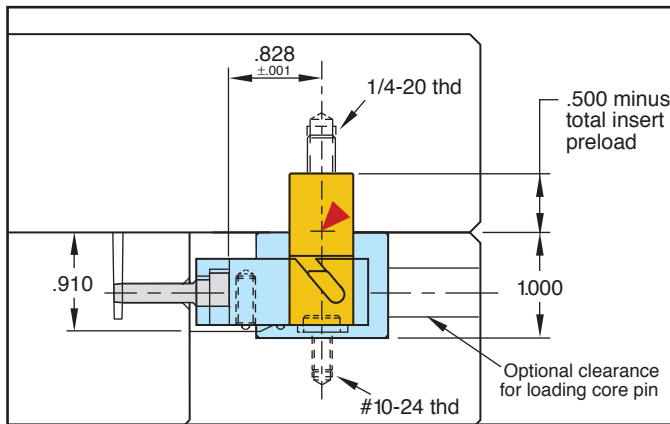
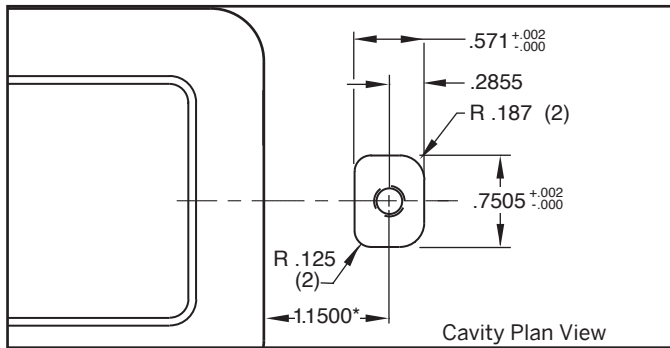
CAM ACTION® 200 SERIES



Inch Standard

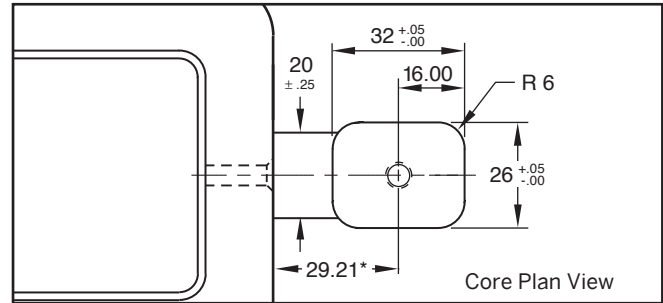


Note: When the core pin is not shutting off on the inner core wall, the distance from the edge of the insert should be 1.1425 for the slide carrier to shut off against the core insert.

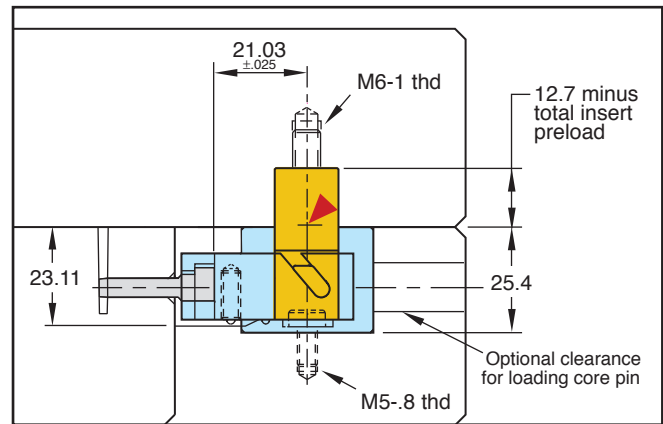
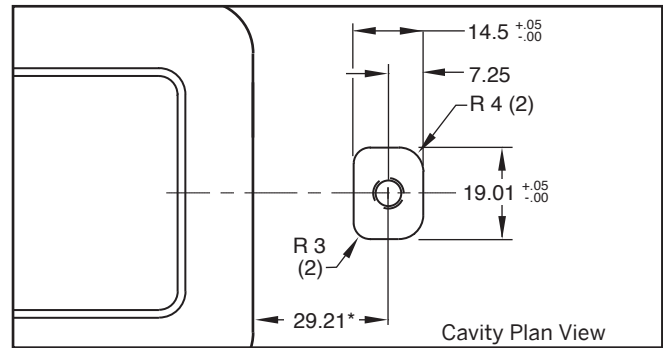


Note: .828 dimension must be maintained to ensure proper shut-off.

Metric Standard



Note: When the core pin is not shutting off on the inner core wall, the distance from the edge of the insert should be 29.02 for the slide carrier to shut off against the core insert.



Note: 21.03 dimension must be maintained to ensure proper shut-off.

Travel = .230" (5.8mm)

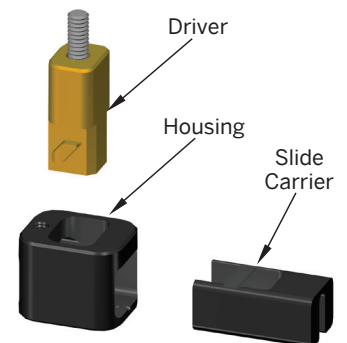
CAD insertion point

CATALOG NUMBER	DESCRIPTION
CA-200	CamAction Unit-Standard Driver
CA-200L	CamAction Unit-Longer Driver
CAMM-200	Metric CamAction Unit-Standard Driver
CAMM-200L	Metric CamAction Unit-Longer Driver

Note: Longer driver allows for extension below parting line up to 3" (76mm).

Note: Max operating temperature 300°F.

Replacement parts are available. Refer to the price list for catalog numbers and pricing, and contact Customer Service for availability.



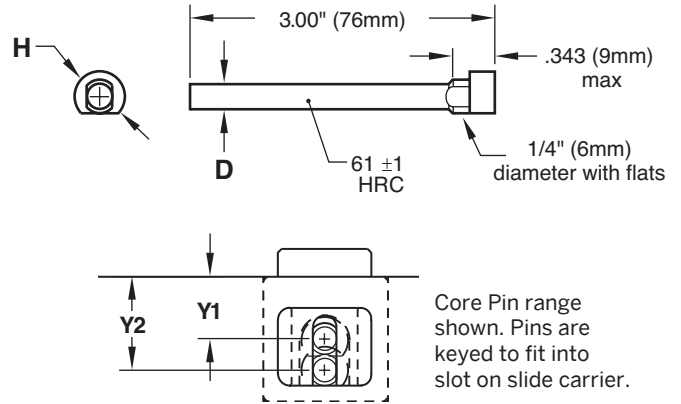


CAM ACTION® ACCESSORIES

100/200 SERIES CORE PINS

M M-2 **H** 60-62 HRC **S** Chrome Plated

CATALOG NUMBER	D	H	Y1	Y2
CAP1-187	$\frac{.1872}{.1869}$.37	.500	.750
CAP1-375	$\frac{.3747}{.3744}$.37	.500	.688
CAPMM-5	$\frac{4.984 \text{ mm}}{4.992 \text{ mm}}$	9.5 mm	12.7 mm	19.05 mm
CAPMM-10	$\frac{9.985 \text{ mm}}{9.992 \text{ mm}}$	9.5 mm	12.7 mm	17.40 mm

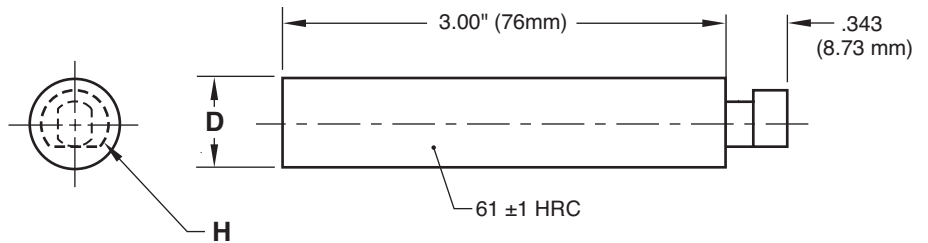


For use with 100 and 200 Series CamActions.
When using with the 100 Series, 2° draft per side (minimum) is required in the molding area.

200 SERIES CORE PINS

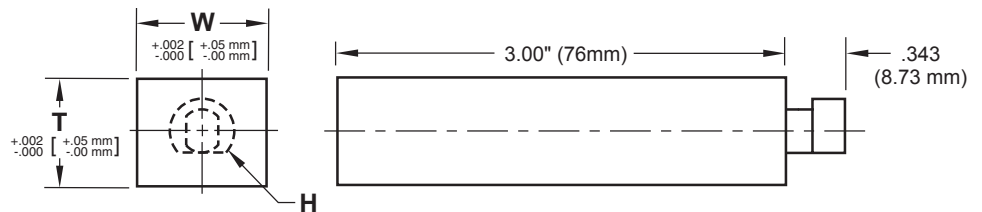
M M-2 **H** 60-62 HRC **S** Chrome Plated

CATALOG NUMBER	D	H
CAP2-500	$\frac{.5001}{.5003}$.37
CAP2MM-13	$\frac{13.002 \text{ mm}}{13.007 \text{ mm}}$	9.5 mm



For use with 200 Series CamActions only.

200 SERIES INSERTS



M P-20 Pre-Hard **S** Salt Bath Nitride

CATALOG NUMBER	T	W	H
CSE2-62X75	.625	.750	.37
CSE2MM-16X19	15.98 mm	19 mm	9.5 mm

For use with 200 Series CamActions only.