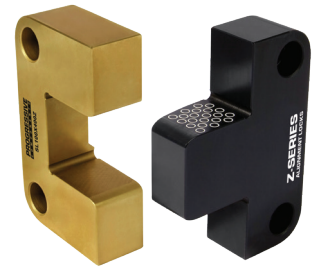
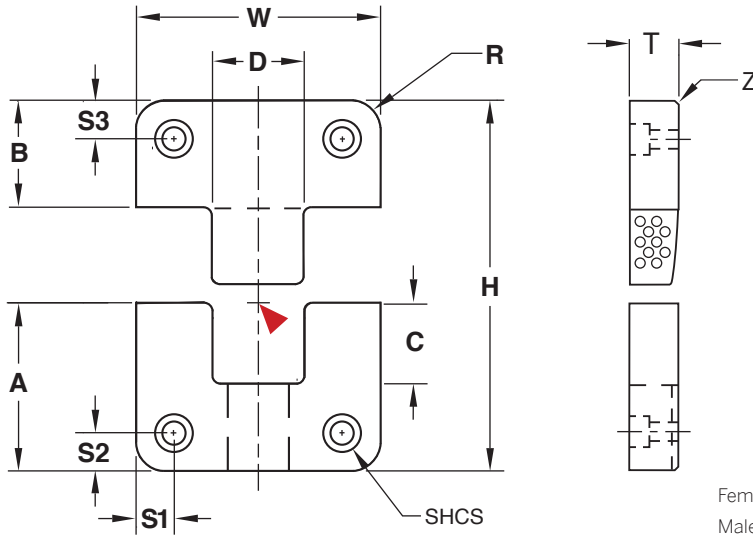




SIDE LOCKS Z-SERIES



Female: **M** D-2 **H** Core: 58-62 HRC, Surface: 80 HRC **S** Titanium Nitride Coated
 Male: **M** H-13 **H** Core: 42-48 HRC, Surface: 70 HRC **S** Salt Bath Nitride

► CAD insertion point

Inch Standard

CATALOG NUMBER	T +.000 -.002	W +.0000 -.0004	A +.000 -.002	B +.000 -.002	C	D .0001/.0003 Clearance Per Side	H +.000 -.004	R Pocket Radius	S1/S2/S3 ±.01	Z Chamfer	SHCS
SL37X100	.375	1.000	1.125	.875	.62	.500	2.000	.187	.250	.015	#10-32 x 1/2"
SL50X125	.490	1.250	1.125	.875	.68	.500	2.000	.187	.250	.03	#8-32 x 5/8"
SL50X150	.500	1.500	.875	.875	.56	.563	1.750	.187	.250	.03	#8-32 x 5/8"
SL50X200	.500	2.000	1.375	.875	.86	.750	2.250	.187	.312	.03	#10-32 x 5/8"
SL75X300	.750	3.000	1.875	.875	1.18	1.250	2.750	.250	.375	.03	1/4-20 x 3/4"
SL100X400	1.000	4.000	2.375	1.375	1.43	1.500	3.750	.500	.500	.03	3/8-16 x 1"
SL125X500	1.250	5.000	2.875	1.375	1.75	2.000	4.250	.500	.625	.03	1/2-13 x 1-1/4"
SL150X600	1.500	6.000	2.875	1.375	1.87	2.500	4.250	.500	.625	.03	1/2-13 x 1-1/2"

Screws included.

Inch Standard-Compatible

CATALOG NUMBER	T +.000 -.002	W +.0000 -.0004	A +.000 -.002	B +.000 -.002	C	D .0001/.0003 Clearance Per Side	H +.000 -.004	R Pocket Radius	S1 ±.01	S2 ±.01	S3 ±.01	Z Chamfer	SHCS
SLC62X150	.620	1.500	.870	.870	.41	.500	1.74	.187	.281	.281	.437	.03	1/4-20 x 3/4"
SLC62X200	.620	2.000	.870	.870	.41	.680	1.74	.187	.375	.375	.437	.03	1/4-20 x 3/4"
SLC75X300	.745	3.000	1.370	1.360	.68	1.000	2.73	.187	.375	.688	.688	.03	3/8-16 x 1"

Screws included.

Metric Standard

CATALOG NUMBER	T +.00 -.05	W +.00 -.01	A +.00 -.05	B +.00 -.05	C	D .002/.008 Clearance Per Side	H + 0.0 - 0.1	R Pocket Radius	S1 ±.25	S2/S3 ±.25	Z Chamfer	SHCS
SLM16X50	16	50	21.5	21.5	13	17	43	5	8	11	.8	M6-1.0 x 18
SLM19X75	19	75	36	36	22.5	25	72	5	12.5	18	.8	M10-1.5 x 20
SLM19X100	19	100	45	45	30	35	90	5	15	22	.8	M10-1.5 x 20
SLM25X125	25	125	45	45	28.7	35	90	5	20.5	22	.8	M10-1.5 x 25

Screws included.

► For custom Locks, refer to the templates in section X.

Note: 500°F max operating temperature.

Lubrication:

- Non-drying, non-hardening food grade grease is applied to all areas, including the particle rings.
- For production, install the locks and wipe down the outside of the Side Locks only; maintain the grease on the mating surfaces and within the rings.