

CounterView®

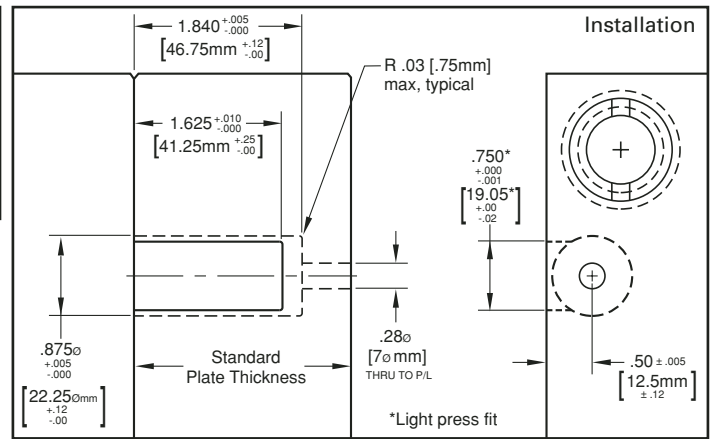
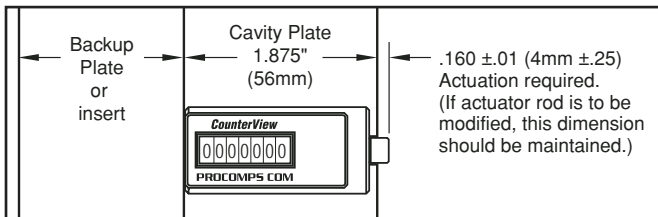
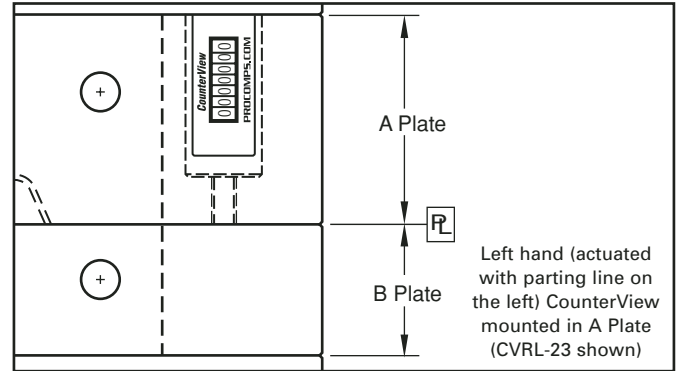
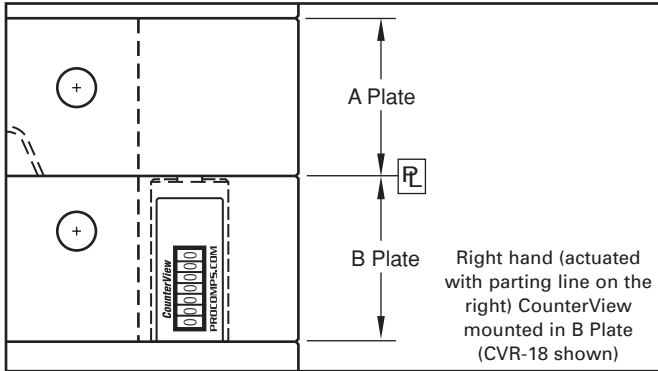
R-Series

Specifications:

Maximum operating temperature is 250°F (120°C)
 Counter: Non-resettable mechanical, 7-digit
 Screws included.



M Glass-filled Nylon housing



The R-Series CounterView can be installed in the A or B plates with a minimum thickness of 1.875" (47mm). Larger plates utilize a threaded rod (included with each) that is pre-machined to the appropriate length for standard plate thicknesses to provide consistent actuation.

D www.procomps.com/design

Parting Line at Left



Inch Standard	
Catalog Number	Nominal Plate Thickness
CVRL-18	1.875
CVRL-23	2.375
CVRL-28	2.875
CVRL-33	3.375
CVRL-38	3.875
CVRL-43	4.375
CVRL-83	8.375

Metric Standard	
Catalog Number	Nominal Plate Thickness
CVRL-56	56
CVRL-66	66
CVRL-76	76
CVRL-96	96
CVRL-116	116
CVRL-196	196

Parting Line at Right



Inch Standard	
Catalog Number	Nominal Plate Thickness
CVR-18	1.875
CVR-23	2.375
CVR-28	2.875
CVR-33	3.375
CVR-38	3.875
CVR-43	4.375
CVR-83	8.375

Metric Standard	
Catalog Number	Nominal Plate Thickness
CVR-56	56
CVR-66	66
CVR-76	76
CVR-96	96
CVR-116	116
CVR-196	196

Each R-Series CounterView includes the actuator. All except CVR-18 and CVRL-18 require attachment of the actuator rod to the threaded CounterView unit.